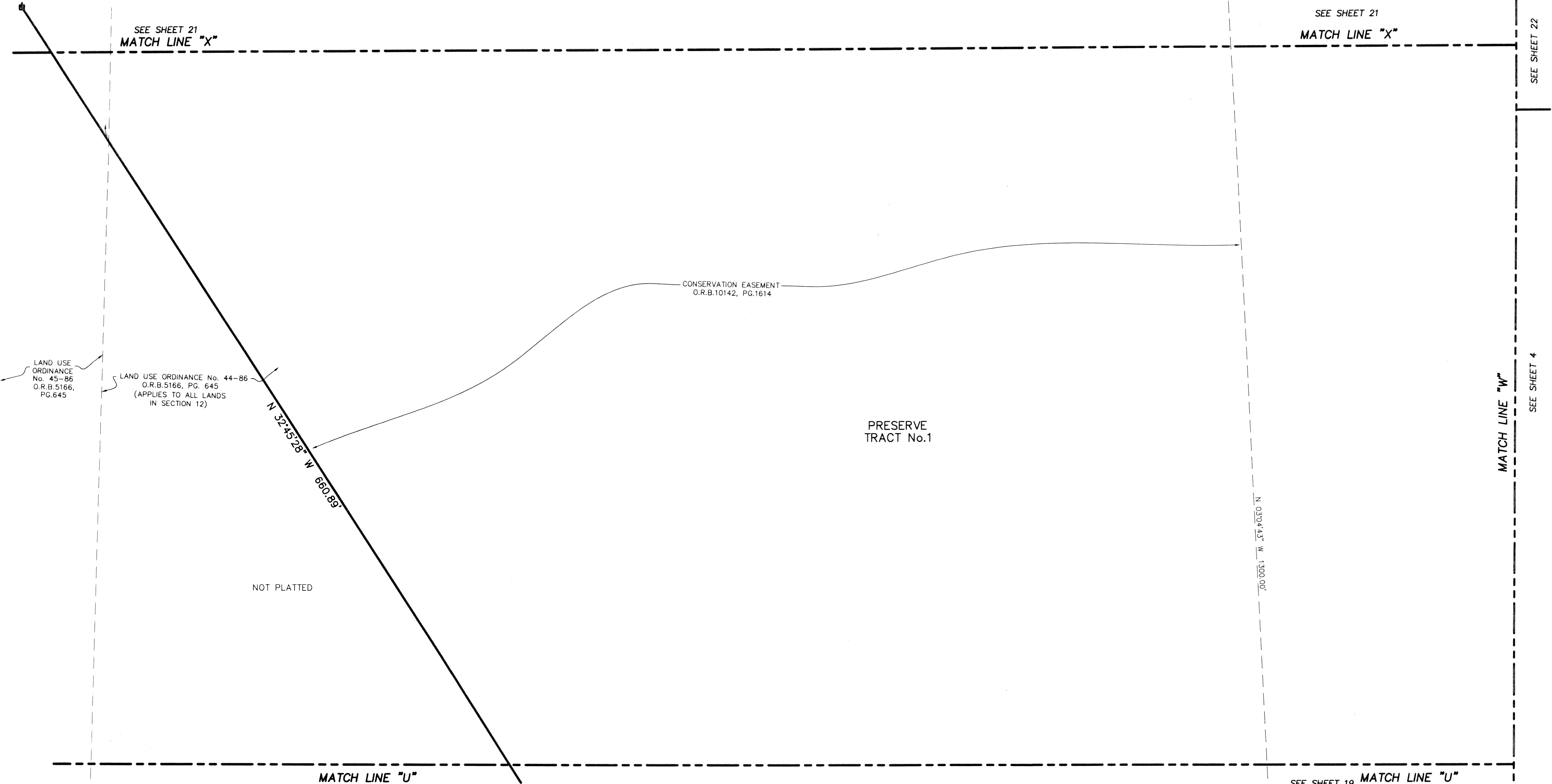
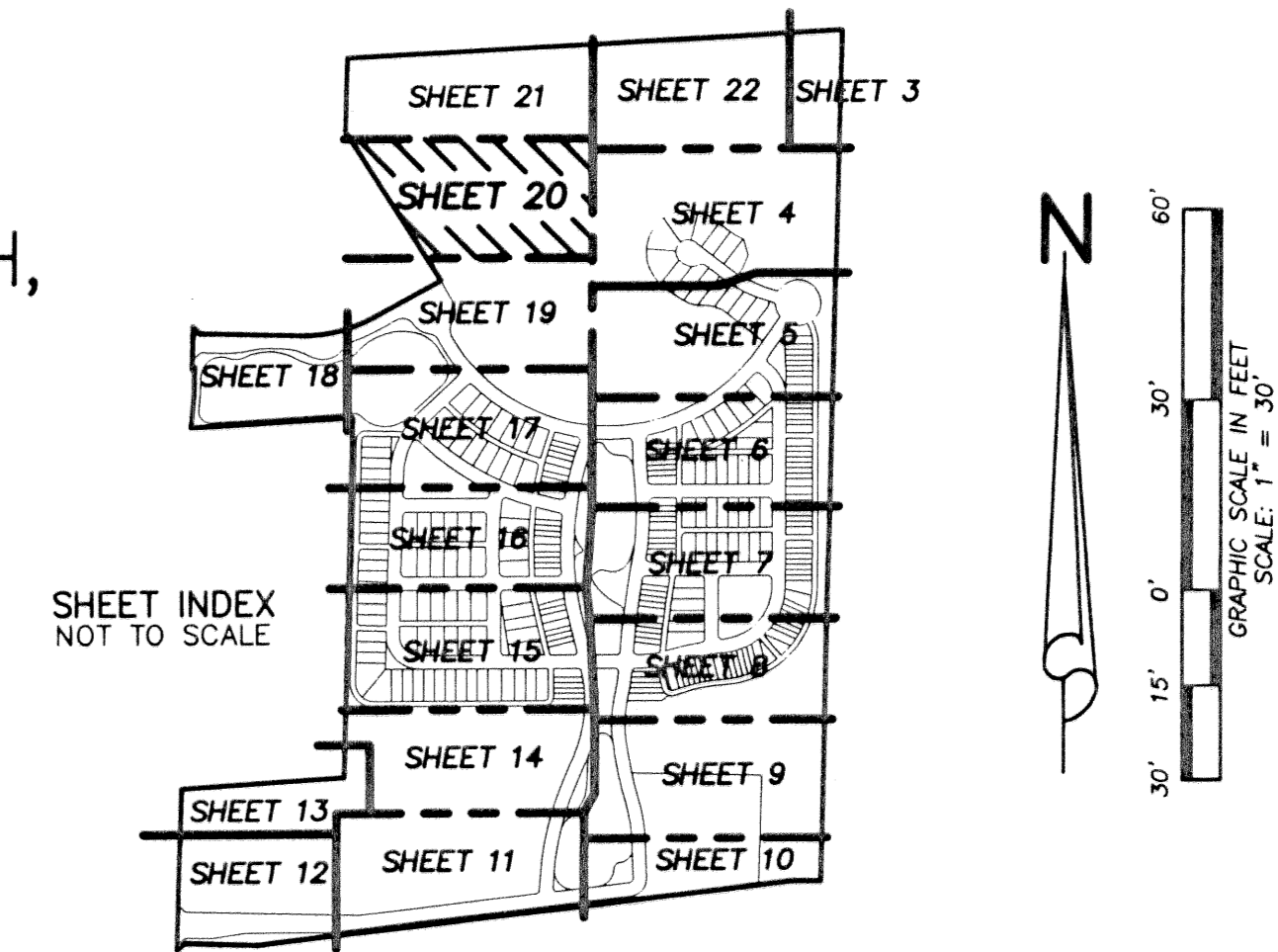


# BOTANICA

BEING A PARCEL OF LAND IN SECTION 12 AND 13, TOWNSHIP 41 SOUTH,  
RANGE 42 EAST, TOWN OF JUPITER, PALM BEACH COUNTY, FLORIDA.

JANUARY, 2003 SHEET 20 OF 22

47



LAND USE ORDINANCE No. 45-86 O.R.B.5166, PG.645

LAND USE ORDINANCE No. 44-86 O.R.B.5166, PG. 645 (APPLIES TO ALL LANDS IN SECTION 12)

NOT PLATTED

PRESERVE TRACT No.1

CONSERVATION EASEMENT  
O.R.B.10142, PG.1614

MATCH LINE "U"  
SEE SHEET 19

SEE SHEET 21  
MATCH LINE "X"

SEE SHEET 22

MATCH LINE "W"  
SEE SHEET 4

SEE SHEET 19 MATCH LINE "U"

**LIDBERG LAND SURVEYING, INC.**  
675 West Indiantown Road, Suite 200, Jupiter, Florida 33458 TEL. 561-746-9454

CAD	K:\AUTOCAD\98-150\1508-306.DWG		
REF	K:\AUTOCAD\		
FLD	B. D.	FB. 000	PG. 00
OFF	W. D. J.	000	00
CKD	W. D. J.	000	00
		JOB	98-150-306
		DATE	02-22-02
		DWG	D98-150P
		SHEET	20 OF 22